

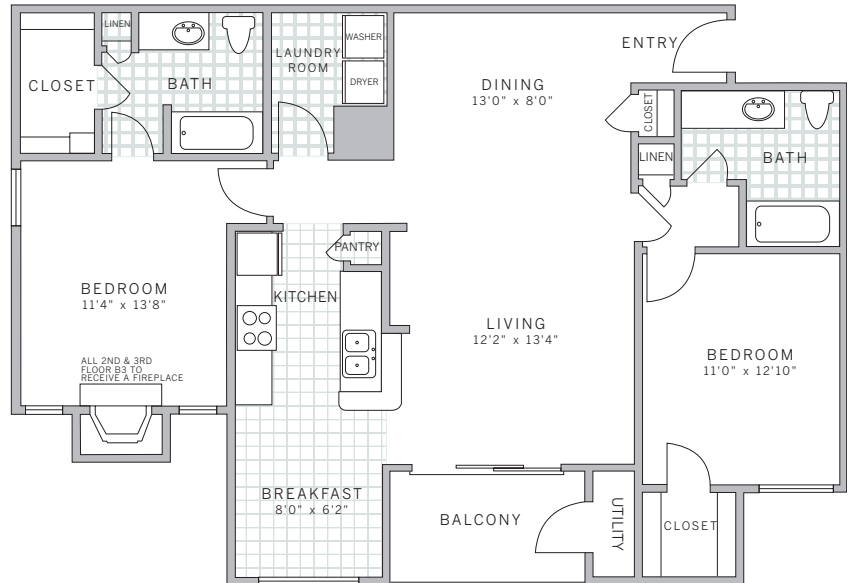
**B3 1190 sq ft**  
**2 bedroom 2 bath**

**suite:** \_\_\_\_\_

**rate:** \_\_\_\_\_

**features**

- kitchen features breakfast bar and double sink
- kitchen pantry
- eat-in kitchen
- dining room
- coat closet off dining room
- private patio/balcony off living room
- master suite features walk-in closet with shelving and linen closet
- select master suites feature fireplaces
- select master suites feature storage nooks
- 2nd bedroom with walk-in closet
- select 2nd bedrooms offer en suite option
- linen closet off 2nd bathroom
- spacious laundry room with full-size washer and dryer and storage space
- select floor plans offer attached garages off laundry room



**AVE**

199 Pierce Street  
Somerset, NJ, 08873  
877.AVE.0247  
aveliving.com