

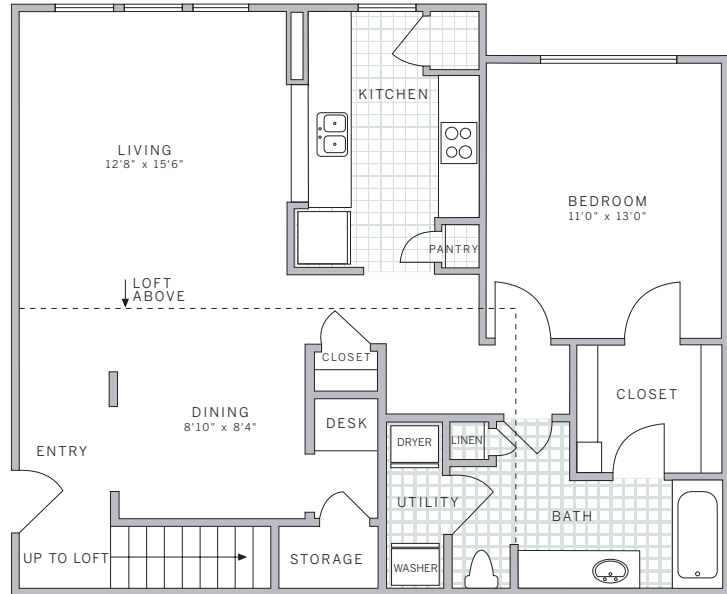
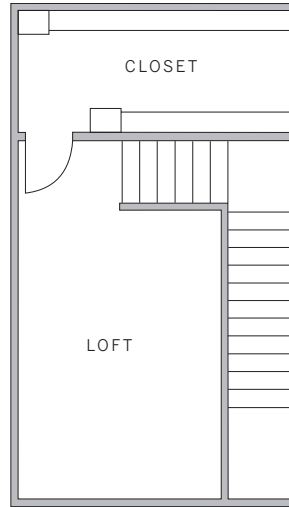
**A2 with loft 1113 sq ft**  
**1 bedroom 1 bath**

**suite:** \_\_\_\_\_

**rate:** \_\_\_\_\_

**features**

- kitchen features breakfast bar and double sink
- kitchen pantry
- dining room
- private patio / balcony off living room
- storage closet off dining room
- built-in desk nook off dining room
- coat closet in hallway
- walk-in closet with bedroom and bathroom access and shelving
- expanded vanity and linen closet in bathroom
- loft space ideal for home office or den
- loft features oversized walk-in closet, vaulted ceilings, and ceiling fan
- full-size washer and dryer in residence



**AVE**

199 Pierce Street  
Somerset, NJ, 08873  
877.AVE.0247  
aveliving.com