

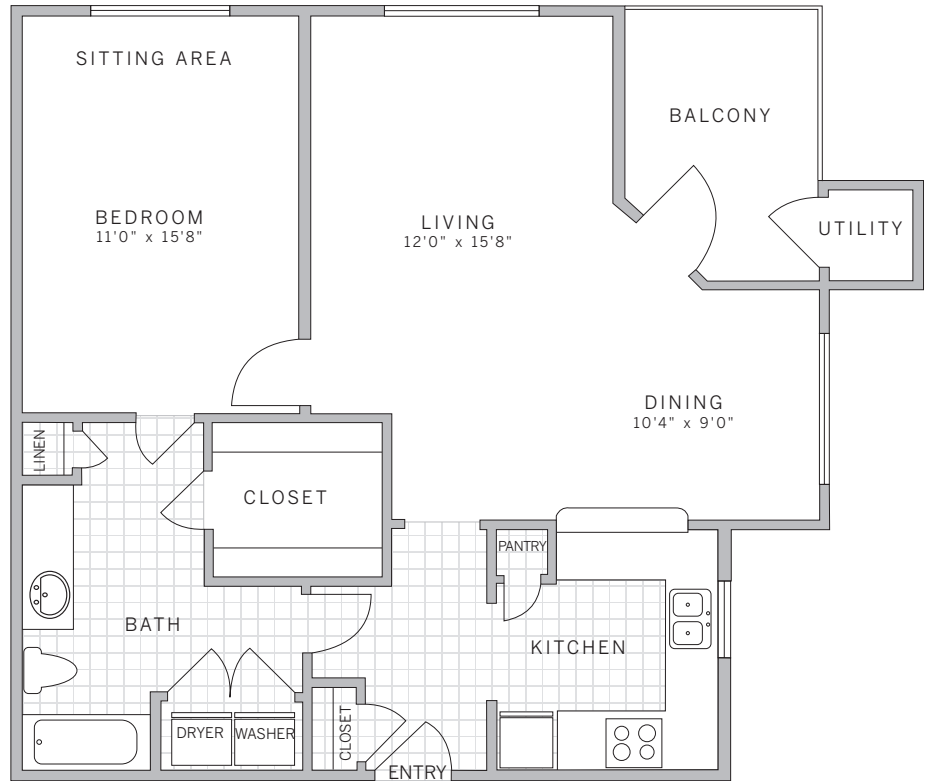
A3 861 sq ft
1 bedroom 1 bath

suite: _____

rate: _____

features

- entry coat closet
- kitchen features breakfast bar and double sink
- kitchen pantry
- dining room
- private corner patio/ balcony off living room
- oversized bedroom features sitting area
- bathroom has attached walk-in closet with shelving
- oversized bathroom features expanded vanity and linen closet
- full-size washer and dryer in residence with shelving space



AVE

199 Pierce Street
Somerset, NJ, 08873
877.AVE.0247
aveliving.com