

## 1 bedroom 1 bath

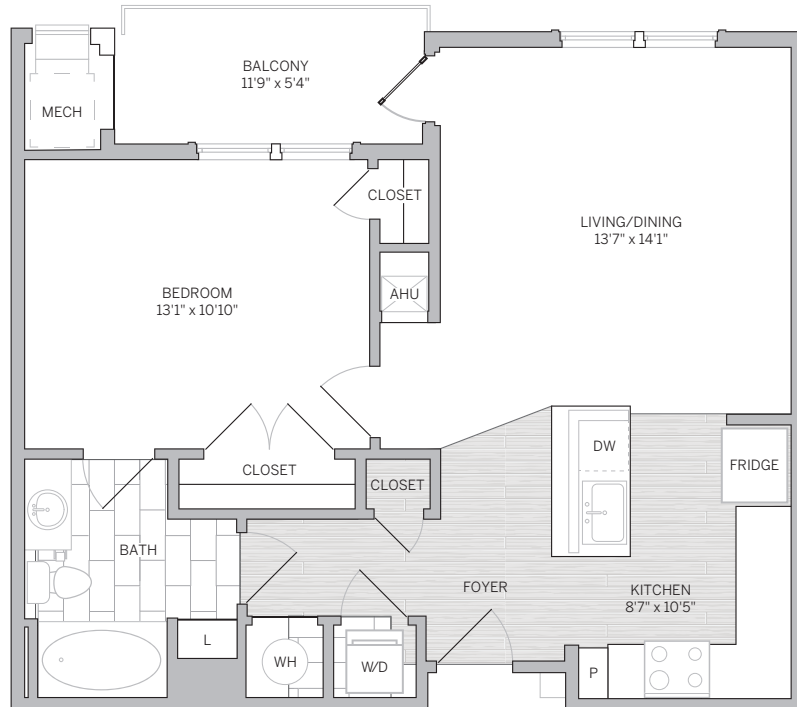
722 sq ft

suite: \_\_\_\_\_

rate: \_\_\_\_\_

### features

- spacious 1-bedroom layout
- kitchen features Lunar pearl granite countertops with shaker-style cabinetry in a rich espresso finish
- stainless steel GE Energy Star kitchen appliance package
- kitchen island with breakfast bar
- deep kitchen sink and chrome gooseneck faucet with pull-down sprayer
- GE Energy Star washer and dryer
- modern pendant lighting
- elegant wood plank flooring in foyer and kitchen areas
- double closets in bedroom
- ceramic tile in bathroom
- large private patio or balcony



# AVE

7000 Cornerstone Drive  
Newtown Square, PA 19073  
610.766.7801  
aveliving.com