

3 bedroom 2 bath

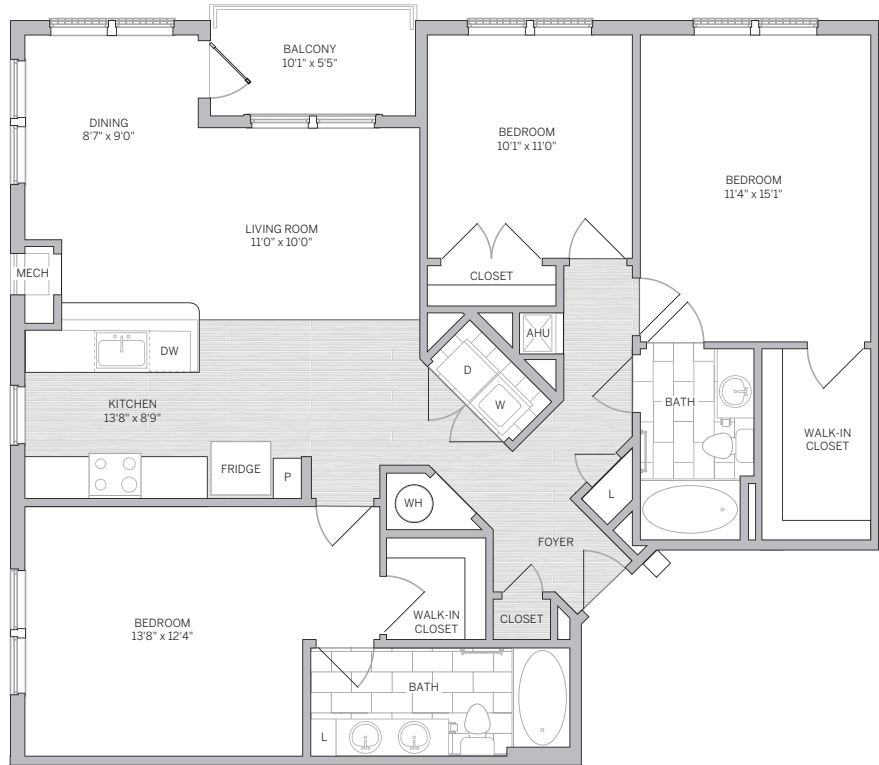
1375 sq ft

suite: _____

rate: _____

features

- extra-large 3-bedroom layout
- kitchen features Lunar pearl granite countertops with shaker-style cabinetry in a rich espresso finish
- deep kitchen sink and chrome gooseneck faucet with pull-down sprayer
- stainless steel GE Energy Star kitchen appliance package
- breakfast bar
- full-size GE Energy Star washer and dryer
- modern pendant lighting
- elegant wood plank flooring in foyer and kitchen areas
- private master suite features walk-in closet and large bathroom with double vanity
- 2nd bedroom features attached large walk-in closet and bathroom access
- ceramic tile in bathrooms
- large private patio or balcony



AVE

7000 Cornerstone Drive
Newtown Square, PA 19073
610.766.7801
aveliving.com