

A6-C

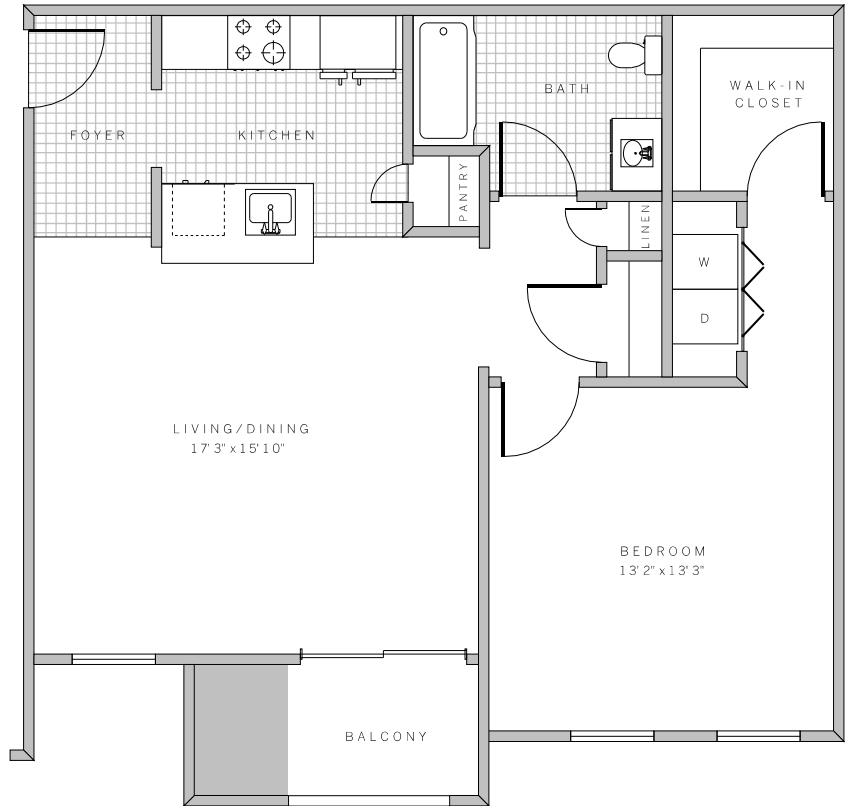
820 sq ft

suite: _____

rate: _____

features

- 9-foot ceilings & oversized windows
- Large private patio/balcony
- Kitchen features granite countertops & backsplashes, self-closing cabinet drawers
- GE Energy Star® stainless steel appliance package
- Custom-cut porcelain tile flooring in foyer, kitchen, and bathroom
- Walk-in closets
- Bathroom features soaker tub & faucets, tub-to-ceiling ceramic tile, Kohler fixtures
- Full-size GE Energy Star® washer and gas dryer in residence
- Tilt-in windows & balcony/patio slider doors
- 2" composite blinds & sliding plantation shutters
- Ultra efficient gas heat & tankless gas hot water heater
- Private keyless fob entry eliminates accidental lockout



AVE

1001 Towamencin Ave
Lansdale, PA, 19446
877.AVE.0251
aveliving.com