

## B6

### 2 bedroom 2 bath

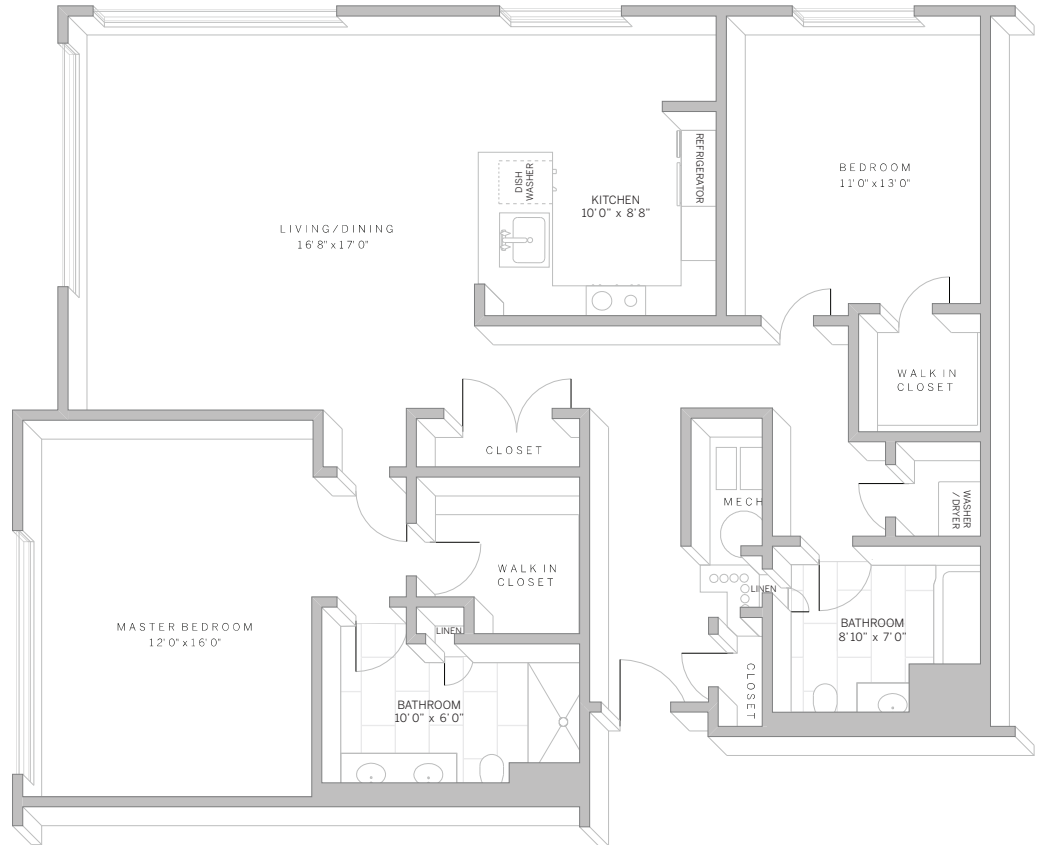
1287 – 1382 sq ft

suite: \_\_\_\_\_

rate: \_\_\_\_\_

#### features

- spacious 2-bedroom layout
- shaker-style interior doors and 5-inch baseboard moulding
- entryway coat closet
- kitchen features contemporary quartz countertops and glass subway tile backsplash, modern cabinetry with soft-closing drawers, and a large Moen gooseneck faucet with pull-down sprayer
- stainless steel Whirlpool kitchen appliance package
- kitchen island with breakfast bar
- bonus hallway closet
- full-size front-load Whirlpool washer and dryer
- elegant wood plank flooring in foyer, kitchen, and living areas
- private master suite features extra-large walk-in closet and bathroom with double sinks
- second bedroom features large walk-in closet
- wall-to-wall carpeting in bedroom(s)
- porcelain tile and linen closets in bathroom(s)



# AVE

90 Park Avenue  
Florham Park, NJ 07932  
877.AVE.0248  
aveliving.com