

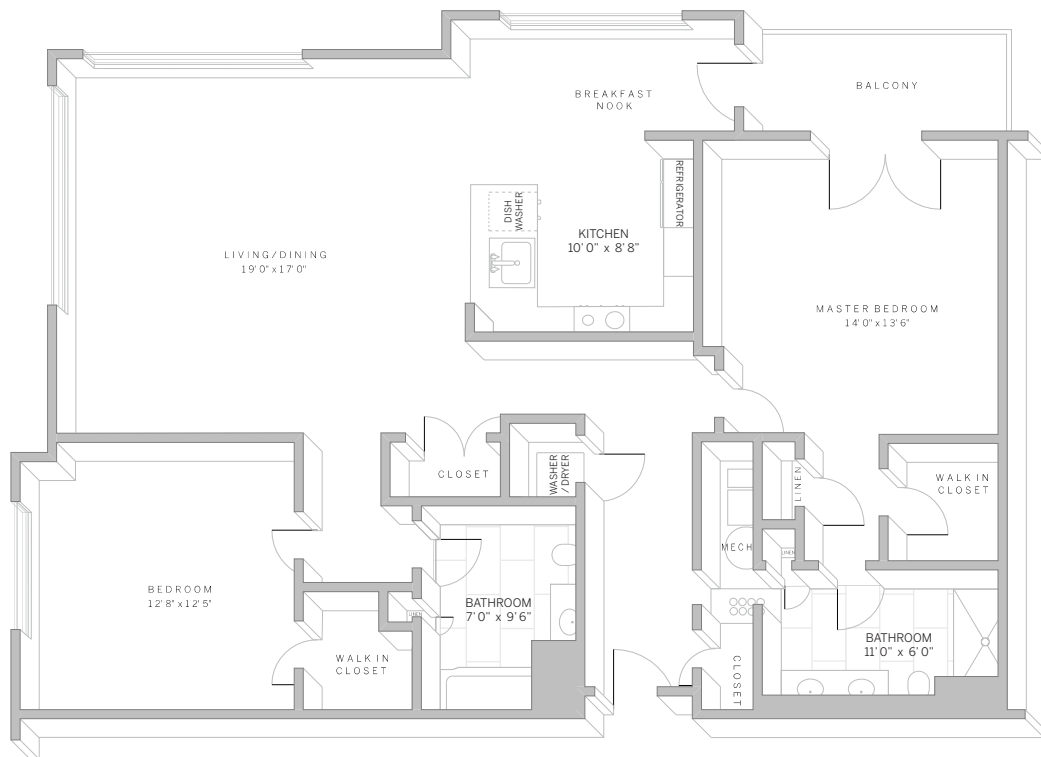
B4
2 bedroom 2 bath
1291 – 1444 sq ft

suite: _____

rate: _____

features

- spacious 2-bedroom layout
- shaker-style interior doors and 5-inch baseboard moulding
- entryway coat closet
- kitchen features contemporary quartz countertops and glass subway tile backsplash, modern cabinetry with soft-closing drawers, and a large Moen gooseneck faucet with pull-down sprayer
- stainless steel Whirlpool kitchen appliance package
- kitchen island with breakfast bar
- bonus breakfast nook
- extra storage closet off living room
- patio/balcony off breakfast nook and master bedroom
- full-size front-load Whirlpool washer and dryer
- elegant wood plank flooring in foyer, kitchen, and living areas
- private master suite features large walk-in closet and bonus second closet and bathroom with double sinks and linen closet
- second bedroom features large walk-in closet
- wall-to-wall carpeting in bedroom(s)
- porcelain tile in bathroom(s)



AVE

90 Park Avenue
Florham Park, NJ 07932
877.AVE.0248
aveliving.com