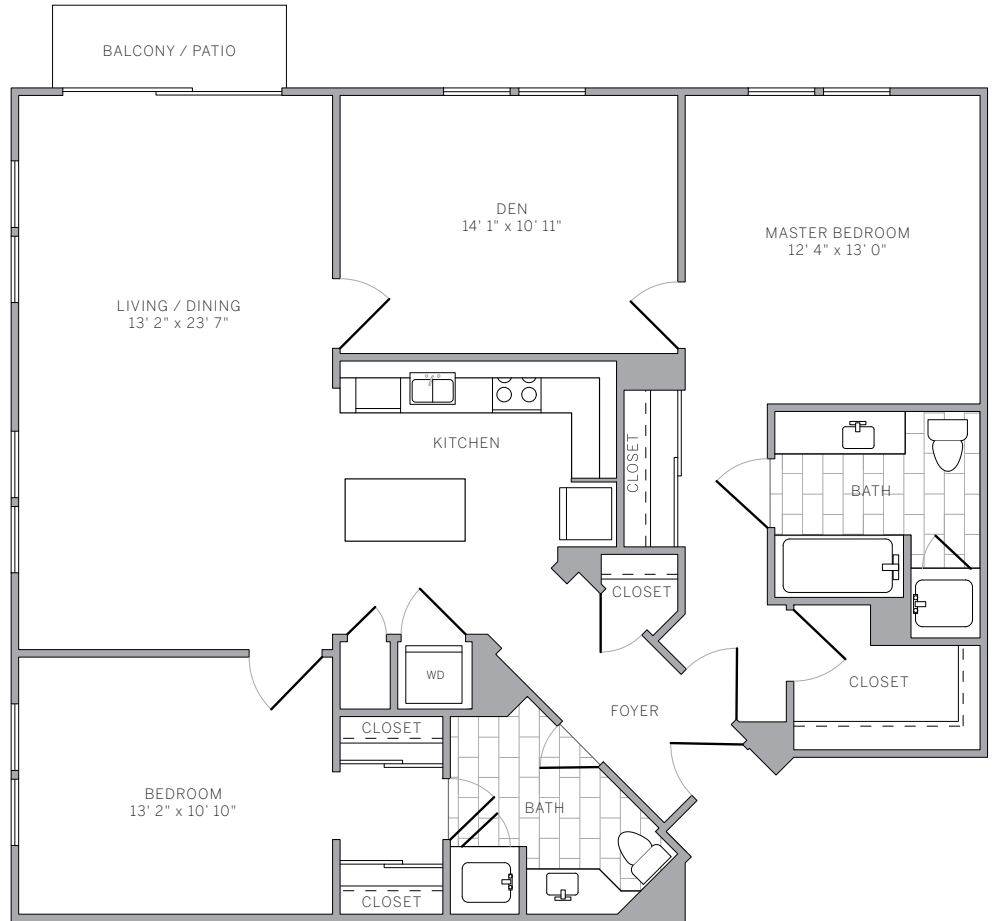


B5 1424 sq ft
2 bedroom 2 bath

features

- spacious 2-bedroom layout
- large foyer with entryway coat closet
- select residences feature elegant wood plank flooring in foyer, kitchen, and living areas
- large kitchens with expansive cabinetry
- select kitchens feature contemporary quartz countertops, modern glass subway tile backsplash, and stainless steel appliances
- washer and dryer in residence
- private patio/balcony off living area
- bonus den perfect for office space
- private master suite features large walk-in closet and bonus closet
- second bedroom features double closets
- wall-to-wall carpeting in bedroom(s)



5684 Bay Street
Emeryville, CA 94608
877.AVE.9320
aveliving.com