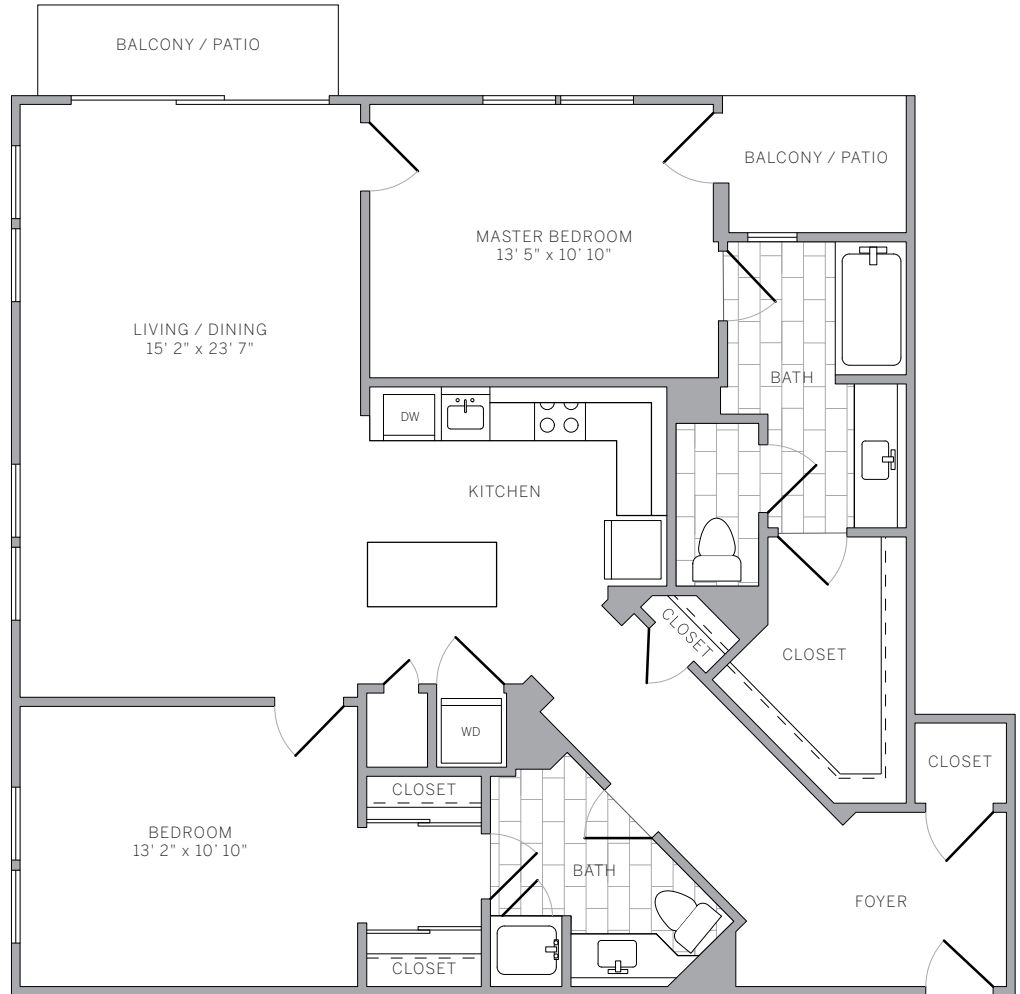


B4 1250 sq ft
2 bedroom 2 bath

features

- spacious 2-bedroom layout
- large foyer with bonus closet
- select residences feature elegant wood plank flooring in foyer, kitchen, and living areas
- large kitchens with expansive cabinetry
- select kitchens feature contemporary quartz countertops, modern glass subway tile backsplash, and stainless steel appliances
- spacious living/dining area
- washer and dryer in residence
- private patio/balcony off living area
- private master suite features private balcony/patio and extra-large walk-in closet
- higher-level apartments offer extraordinary area views
- second bedroom features standing glass shower
- wall-to-wall carpeting in bedroom(s)



5684 Bay Street
Emeryville, CA 94608
877.AVE.9320
aveliving.com