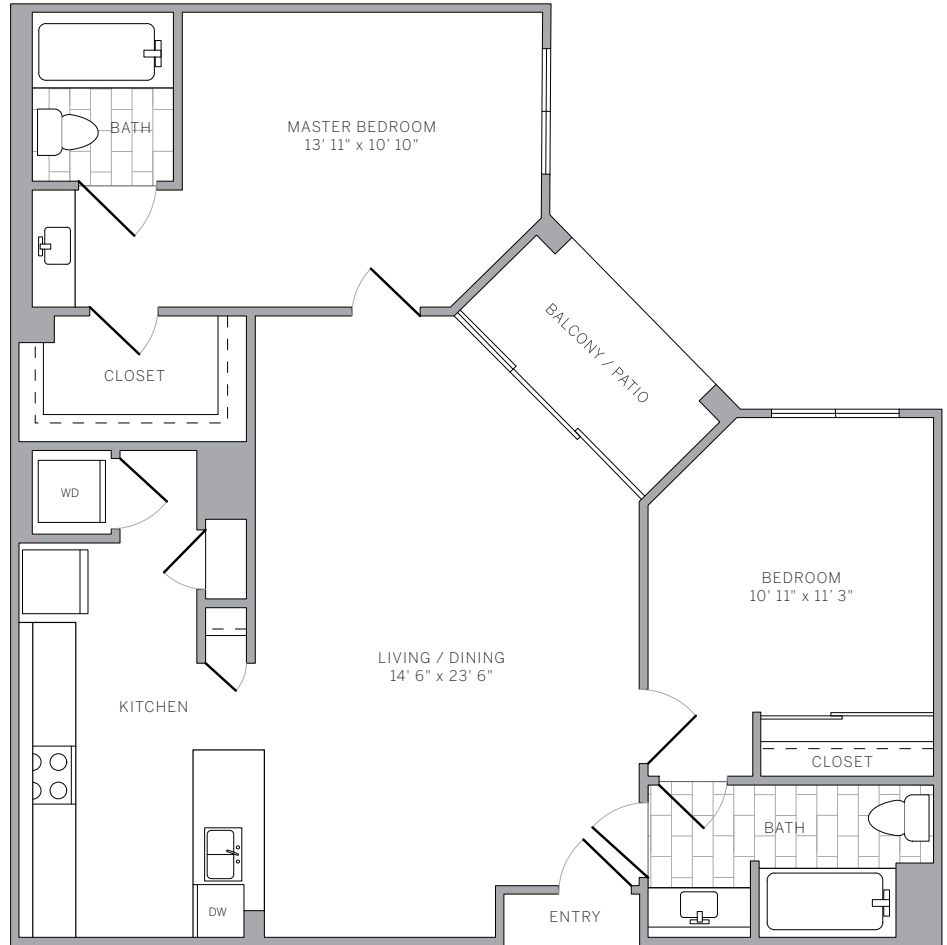


**B2 1033 - 1036 sq ft**  
**2 bedroom 2 bath**

**features**

- spacious 2-bedroom layout
- select residences feature elegant wood plank flooring in foyer, kitchen, and living areas
- large kitchens with expansive cabinetry and pantry
- select kitchens feature contemporary quartz countertops, modern glass subway tile backsplash, and stainless steel appliances
- washer and dryer in residence
- extra-large private balcony or patio
- private master suite features large walk-in closet
- wall-to-wall carpeting in bedroom(s)



5684 Bay Street  
Emeryville, CA 94608  
877.AVE.9320  
aveliving.com