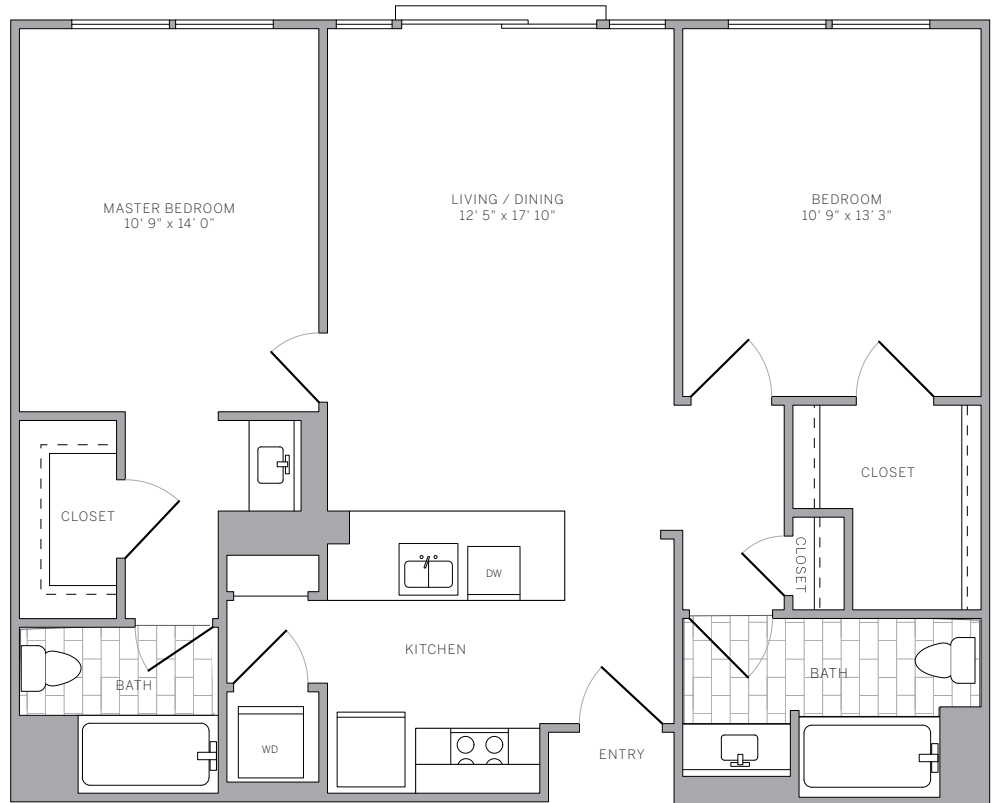


B1 1033 sq ft
2 bedroom 2 bath

features

- spacious 2-bedroom layout
- select residences feature elegant wood plank flooring in foyer, kitchen, and living areas
- spacious kitchens with expansive cabinetry
- select kitchens feature contemporary quartz countertops, modern glass subway tile backsplash, and stainless steel appliances
- washer and dryer in residence
- bonus hallway closet
- private Master Suite features large walk-in closet
- second bedroom features extra-large walk-in closet
- wall-to-wall carpeting in bedroom(s)



5684 Bay Street
Emeryville, CA 94608
877.AVE.9320
aveliving.com