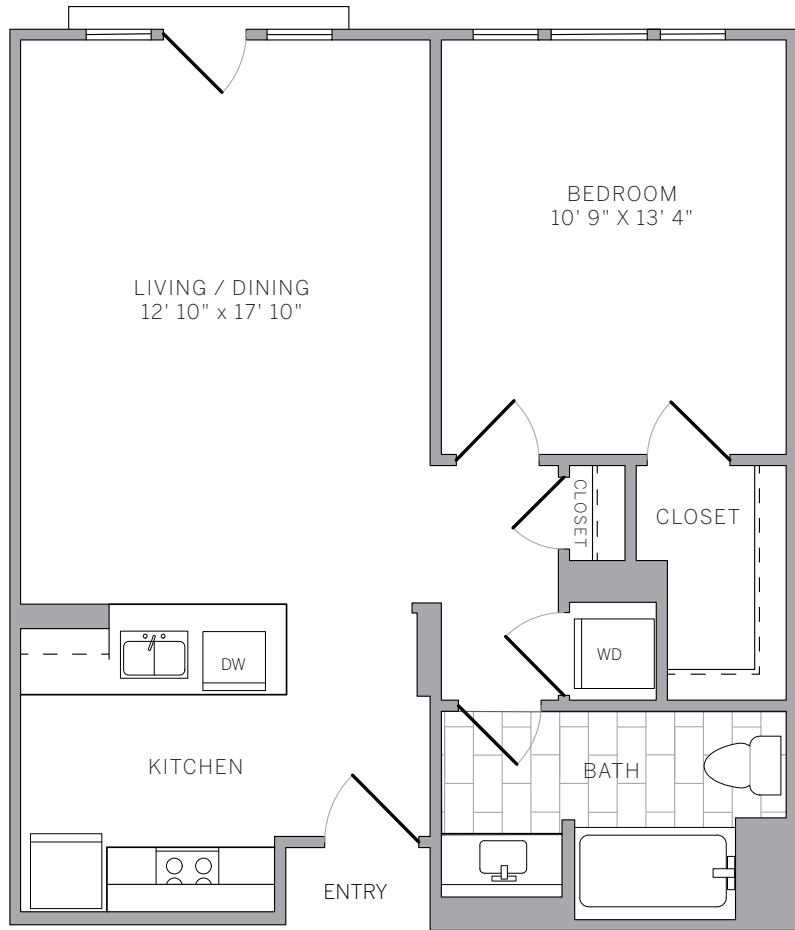


A1 714 sq ft
1 bedroom 1 bath

features

- large 1-bedroom layout
- select residences feature elegant wood plank flooring in foyer, kitchen, and living areas
- spacious kitchens with expansive cabinetry
- select kitchens feature contemporary quartz countertops, modern glass subway tile backsplash, and stainless steel appliances
- bonus hallway closet
- washer and dryer in residence
- wall-to-wall carpeting in bedroom
- bedroom features large walk-in closet
- first-floor apartments feature terraces and higher level residences feature private balconies - a few units have Juliet balconies



5684 Bay Street
Emeryville, CA 94608
877.AVE.9320
aveliving.com